

## Bali trip July 2013 (Thomas Garm Pedersen)

### Mammals



Crab-eating macaque (adult)



Crab-eating macaque (juvenile)



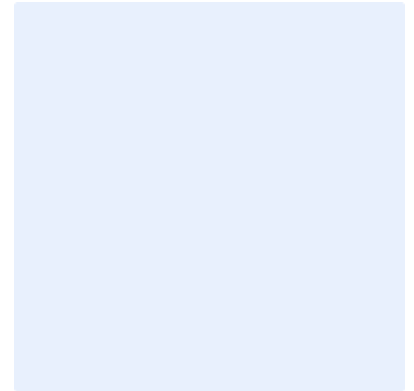
Bali squirrel



Short-nosed fruit-bat



Short-nosed fruit-bat (Group)



### Reptiles



Water monitor



Water monitor (swimming)



Bali skink (male)





**Bali skink (female)**



**Asian house gecko**



**Tokay gecko**



**Flying dragon**



**Flying dragon (pair)**



**Water snake**

## **Birds**



**Blue-tailed bee-eater**



**Blue-tailed bee-eater (feeding)**



**Blue-tailed bee-eater (flying)**





**Cerulean kingfisher**



**Collared kingfisher**



**Javan kingfisher**



**Javan kingfisher (pair)**



**Olive-backed sunbird (male)**



**Olive-backed sunbird (female)**



**Scarlet-headed flowerpecker (male)**



**Scarlet-headed flowerpecker (fem.)**



**Scarlet-headed flowerpecker (pair)**



**Pacific reef heron**



**Purple heron**



**Javan pond heron**





**Little egret**



**Great egret**



**Cattle egret**



**Black-crowned night-heron**



**Black-crowned night-heron (juv.)**



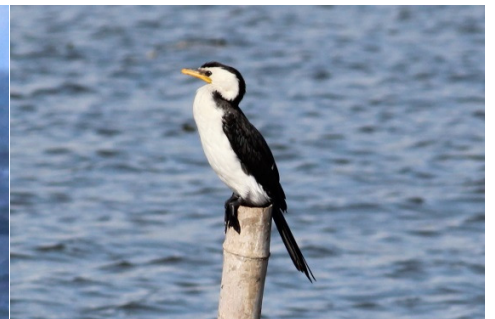
**Little heron**



**White-bellied sea-eagle**



**White-bellied sea-eagle (with prey)**



**Little pied cormorant**



**Long-tailed shrike**



**White-breasted waterhen**



**Spotted dove**





**Yellow-vented bulbul**



**Sooty-headed bulbul**



**Common mynah**



**Pacific swallow**



**Scaly-breasted munia**



**Javan munia**



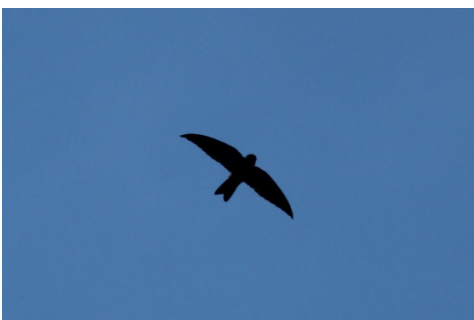
**Eurasian tree-sparrow**



**Common iora**



**White-shouldered triller**



**Swift**



**Large-billed crow**



**Red junglefowl (tame)**



## Butterflies



Tailed jay



Common Mormon (female)



Great orange tip



Plain tiger



Caper gull



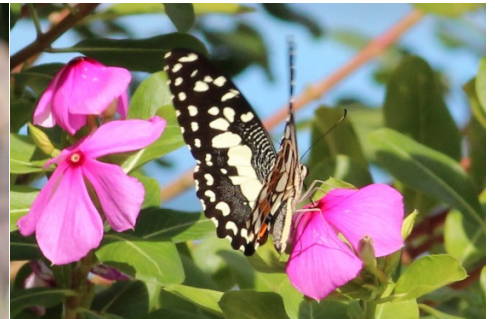
Rustic butterfly



Common leopard



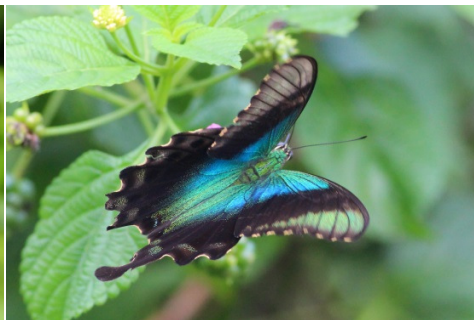
Brown pansy



Lime butterfly



Blue glassy tiger



Swift peacock



Common sailer





Great eggfly



Great eggfly (female form)



Grass yellow



Pea-blue butterfly



Common Mormon (male)



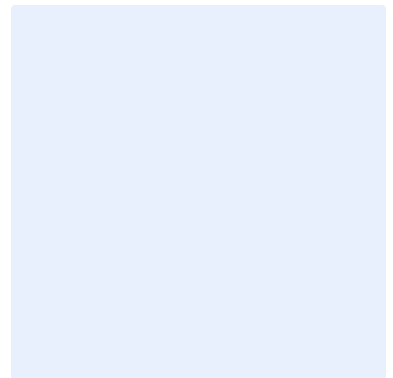
Common pierrot



Unidentified



Unidentified



**Other insects**



Rhinoceros beetle



Dragonfly

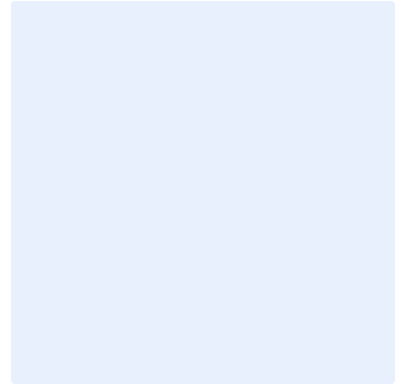
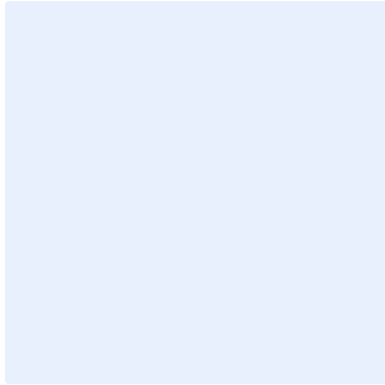


Cricket

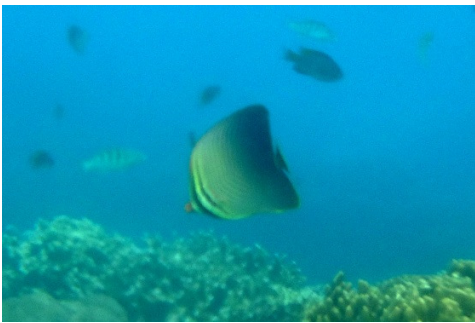




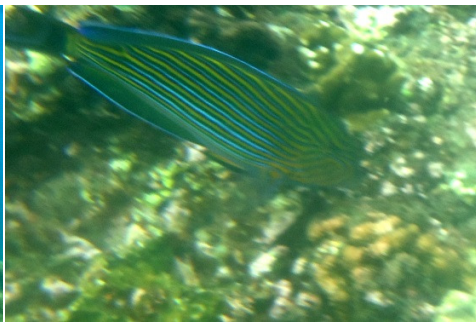
**Grasshopper**



**Fish**



**Eastern triangular butterflyfish**



**Blueline surgeonfish**



**Parrotfish**



**Butterflyfish**



**Hardwick wrasse**



**Moorish idol**



**Moorish idol (hiding)**



**Yellow boxfish**



**Porcupinefish (dead)**



## Miscellaneous



**Black-spined toad**



**Sea snail**



**Land snail**



**Giant wood spider**

