

Kos (Greece) trip June/July 2014 (Thomas Garm Pedersen)

Reptiles



Starred agama



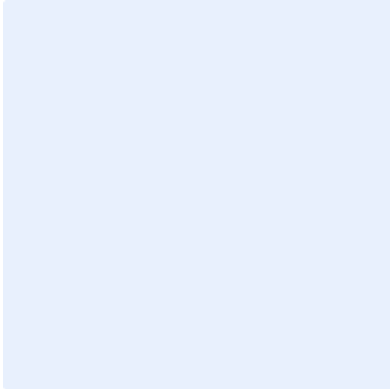
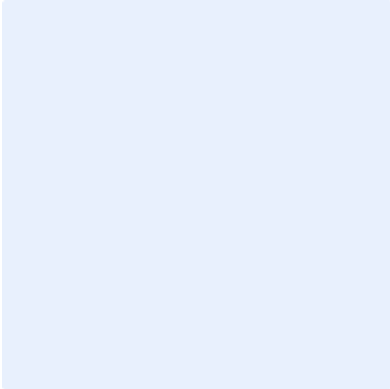
European snake-eyed lizard



Balkan green lizard



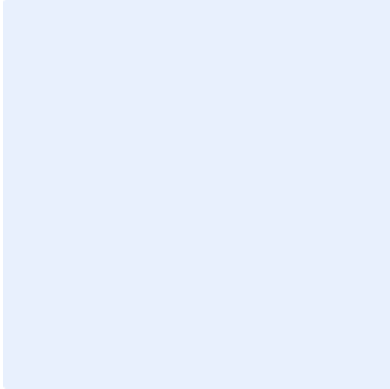
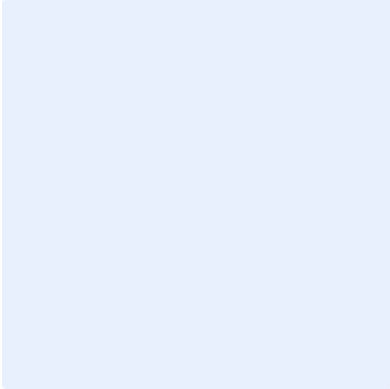
Balkan green lizard



Mammals



Rabbit



Birds



Lesser kestrel (female)



Lesser kestrel (male)



Little owl



Raven



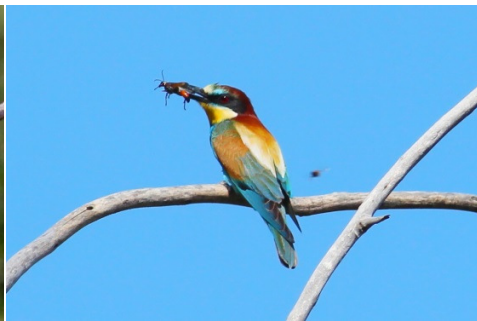
European roller



European roller



European bee-eater



European bee-eater



European bee-eater



Flamingo



Flamingo



Little egret



Black-winged stilt



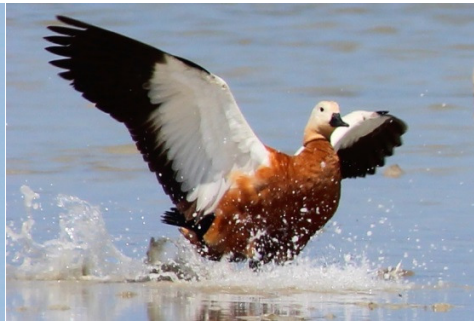
Black-winged stilt



Marsh sand piper



Common tern



Ruddy shelduck



Yellow-legged gull



Eurasian collared-dove



Domestic pigeon



Chukar (juv.)



Eurasian jackdaw



Hooded crow



Magpie



Eurasian coot



Little ringed plover



Crested lark



Barn swallow



Little swift



Common swift



White wagtail



European greenfinch



Sardinian warbler (juv.)



Northern wheatear



Unidentified



House sparrow

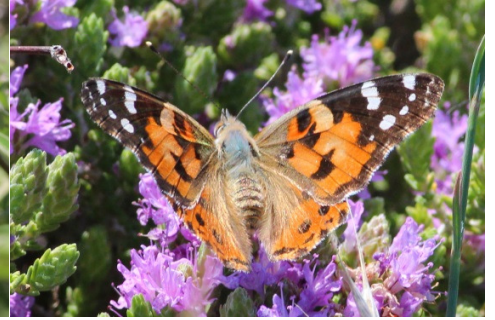
Butterflies



Swallowtail



Scarce swallowtail



Painted lady



Tree grayling



Wall brown



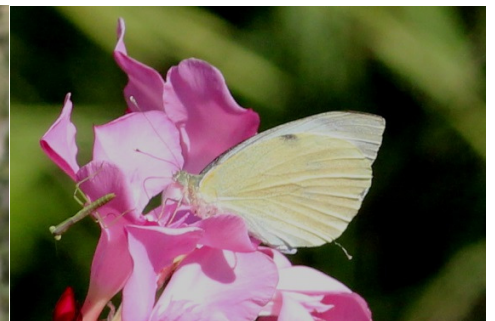
Small copper



Baton blue



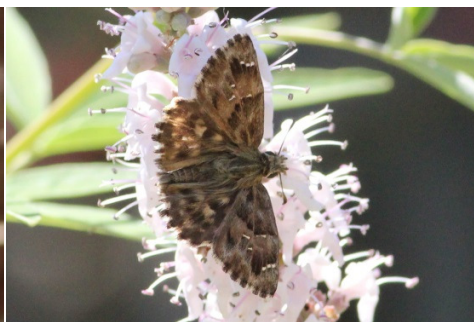
Bath white



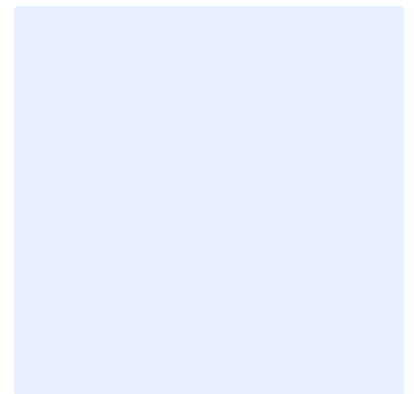
Large white



Small branded swift



Olive skipper



Other insects



Jersey tiger



Mole cricket

